



**SOUTH & CITY COLLEGE
BIRMINGHAM
& UNIVERSITY CENTRE**

THE RIGHT CHOICE FOR ME

HIGHER LEVEL & UNIVERSITY COURSE GUIDE 2024/25

WELCOME TO SOUTH & CITY COLLEGE BIRMINGHAM



You are definitely on the right track considering South & City College Birmingham for your education and your future. You may not yet know exactly what you want to be when you finish

your education, but we will help you through every step.

Every year, we help thousands of students achieve their qualifications and get the knowledge and experience that will help in life and help gain excellent well-paid jobs and careers. I know that choosing can be hard – especially after the challenging year you've had in school with all the recent restrictions in the UK – but we're as confident as ever that we can help make you a better person and shape your future.

Here at the college, I and my staff work non-stop to provide you with everything you can possibly need to get ahead. You will benefit from hands-on learning that gives you a massive advantage when securing jobs and boosting your CV.

Don't forget to visit one of our upcoming Open Days, where our fantastic tutors will answer all your questions and tell you more about what makes South & City College Birmingham such a special place to study. I look forward to welcoming you to the college soon.

MIKE HOPKINS MBE, PRINCIPAL



Studying for a Degree or higher level qualification is a great pathway for your future. Whether you are at the start of your career journey, looking to retrain or ready to take on a new challenge, there

are so many reasons why South & City College Birmingham is the perfect place to study.

From our extensive offer of courses with levels 4-7 across our suite of HNCs, HNDs, HTQs, foundation degrees and honours degrees our dedicated staff are here to help you make the most out of your time with us.

We pride ourselves on our commitment to preparing you for employment in your chosen sector or industry by supporting the development of both your academic knowledge and vocational skills.

Our smaller class sizes allow us to get to know you as individuals and provide more specialist one-to-one support throughout your course in a friendly and professional learning environment. By studying locally, you will have access to academic experts, excellent links to local employers and industry, along with opportunities for educational visits, without the expense of accommodation costs associated with studying further afield.

With affordable tuition fees, studying for a Degree or higher level qualification at South & City College Birmingham not only provides you with a great experience, but it will also allow you to learn, develop and progress without having to break the bank. On behalf of the entire Higher Education division at the college, we look forward to welcoming you as part of our education family.

DALE WOOLLEY, DEAN OF HIGHER EDUCATION



OPEN DAY

SATURDAY 15 JUNE

10am-3pm

At our Open Events, you can explore our college facilities, speak to our teaching staff and take part in taster sessions, plus there are normally a few freebies on offer.

Find out more and register online:

sccb.ac.uk/events

or follow us on social media
to stay up to date.



**PROFESSIONAL
FACILITIES**
at each
campus

EASY ACCESS
to each campus
via public
transport

Two dedicated
HE CENTRES



SOUTH & CITY COLLEGE
BIRMINGHAM
& UNIVERSITY CENTRE

Smaller class
sizes for
**1-1
SUPPORT**

Study on
one of our
**PROFESSIONALLY
AWARDED**
courses

**AWARDS+
CELEBRATIONS**
to pay tribute to
student success
every year

**DEDICATED
APP**
for students

**FREE
PUBLIC GYM
ACCESS**
for students

**FREE
WI-FI**
on campus

GREAT UNIVERSITY PARTNERSHIPS



UNIVERSITY OF
BIRMINGHAM



DE MONTFORT
UNIVERSITY
LEICESTER



BIRMINGHAM CITY
University



Birmingham
Newman
University

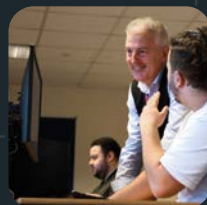
Work with
**RENOWNED
COMPANIES**

Study in the
**HEART OF
BIRMINGHAM**

Commitment
to equality and
diversity with the
RAINBOW FLAG
award

**FREE
EQUIPMENT**
for learners
in need

WHY STUDY WITH US?



ON COURSE TO A CAREER

As a college, we are committed to ensuring our learners are career ready and that you realise your employment potential.

STAND OUT FROM THE CROWD

Build your experiences through a range of extracurricular activities and opportunities thanks to our student enrichment programme.

EXPERIENCE OUR INDUSTRY CONNECTIONS

Our HE courses place you at the heart of them. Work on real-world projects and business proposals to get involved with the local community and network with professionals.

MAKE LASTING CHANGE

Through regular consultation with the government and students, our courses are designed to meet your needs and those of potential employers. With a range of assessment and feedback methods available, you'll have the chance to tailor your learning to your interests.

We are here to listen to you: we have a dedicated Higher Education division team to help you develop your skills and support you on a one-to-one basis. We are here to ensure you can access the support you need at any point in your learning journey.

your DEGREE your WAY

To make your university experience the very best it can be, we offer several different pathways and study options to help fit your degree around you.

PLANNING TO STUDY FULL-TIME?

While you will not normally be in lectures all day every day, the time you are expected to allocate to personal reading or study means this degree is effectively full-time. Even if you choose to study full-time, there is still a lot of flexibility – such as work experience placements, assessments and industry placements.

DIDN'T GET THE GRADES YOU WANTED?

We also have several different access to higher education courses that helps you to build on your ambition and potential to succeed on our university level courses. These are perfect if you didn't meet the entry requirements for a particular course, as they will enable you to develop your learning in preparation for a degree.

NEED TO BALANCE WORK AND STUDY?

Our part-time pathway provides flexible provision that covers the same modules as a full-time course but gives you the flexibility to complete your studies over a longer period.



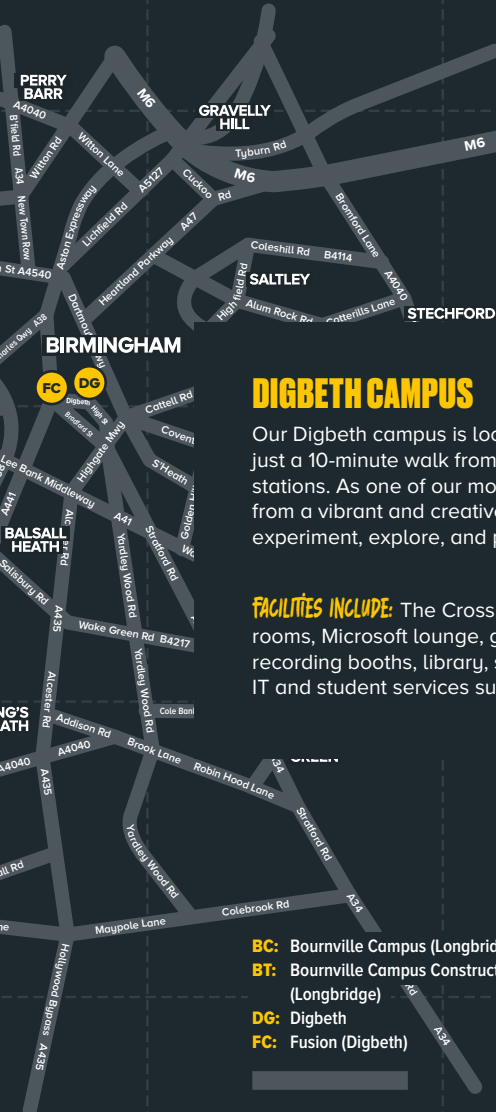
Our Bournville campus is located in the heart of Longbridge and a 5-minute walk from the train station. As one of our newer buildings, you will benefit from a fresh space filled with the latest technology, facilities, and spaces.

FACILITIES INCLUDE: Karibunis restaurant, hair and beauty salons, automotive workshops, Urban Fitness gym, mechanical engineering centre, cinema room, students' union, library, photography darkrooms and greenrooms, industry music rooms, dedicated IT and student services support.

CAMP



COURSES



DIGBETH CAMPUS

Our Digbeth campus is located in Birmingham's Creative Quarter, just a 10-minute walk from Moor Street and Grand Central train stations. As one of our most iconic campuses, you will benefit from a vibrant and creative space filled with opportunities to experiment, explore, and pursue your creative interests.

FACILITIES INCLUDE: The Crossing auditorium, Mac suites, recording rooms, Microsoft lounge, green screen studios, sound-proofed recording booths, library, student games room, gym, dedicated IT and student services support.



FACILITIES

ACROSS CAMPUSES

When you choose to study at South & City College Birmingham, you can be confident that your learning needs are our top priority.

IT RESOURCES

Once you have fully enrolled, you will have access to a SCCB email address, free secure file storage and free, high-speed wi-fi, as well as the use of open-access computers across our buildings. Our IT help desk is on hand to resolve any technical issues and offer help and advice in your use of our systems and services, whilst specialist software is provided across all appropriate courses.



MECHANICAL ENGINEERING CENTRE



SPACE TO STUDY IN OUR LIBRARIES



ELECTRIC VEHICLE WORKSHOP

BOURNVILLE
CAMPUS LIBRARYSTATE-OF-THE-ART MUSIC FACILITIES AT
'THE CROSSING', DIGBETH CAMPUS

FUSION CENTRE FASHION WORKSHOP

'URBAN FITNESS' GYM,
BOURNVILLE CAMPUS

LIBRARY AND LEARNING RESOURCES

You will have access to a wide range of digital and print resources. These have been selected in partnership with your tutors, so are quality assured and relevant to your course. If you need help in person or online, our expert staff are here to help you get the best from the time you invest in developing your information-seeking skills.

If your course is awarded by Birmingham City University (BCU), then you can access their learning resources too.

HAIR & BEAUTY SALON,
BOURNVILLE CAMPUS

FULL SUPPORT FOR
STUDENTS WITH
ADDITIONAL NEEDS



MONEY MATTERS

AND SUPPORT AVAILABLE

When studying a new course or programme, worrying about money and your wellbeing should not be on your list of things to do. At South & City College Birmingham, we want our learners to have all the support and information that they need.

STUDENT FINANCE UK

If you are planning on studying a higher education course such as an honours degree, foundation degree, HND or HNC, you may be eligible to apply for funding for payment of your tuition fees and receive a maintenance loan.

More information about student finance can be found on the gov.uk website via: www.gov.uk/student-finance/who-qualifies

DISABLED STUDENT ALLOWANCE

If you have a learning support need or disability, you may be eligible for additional funding to help you with your studies. More information and how to apply can be found on the gov.uk website via: www.gov.uk/disabled-students-allowance-dsa

For more information regarding financial aid or support, please visit our website via: www.sccb.ac.uk/for-students/money-matters/



WELLBEING SUPPORT

Our Welfare and Guidance Officer team are available for drop-in or booked appointments in Student Services at any of our campuses. Common issues that students see Guidance Officers to address include: money worries, housing / homelessness, benefits, family issues, safeguarding issues such as domestic violence, forced marriage, drug and alcohol use and mental health, health, and immigration.

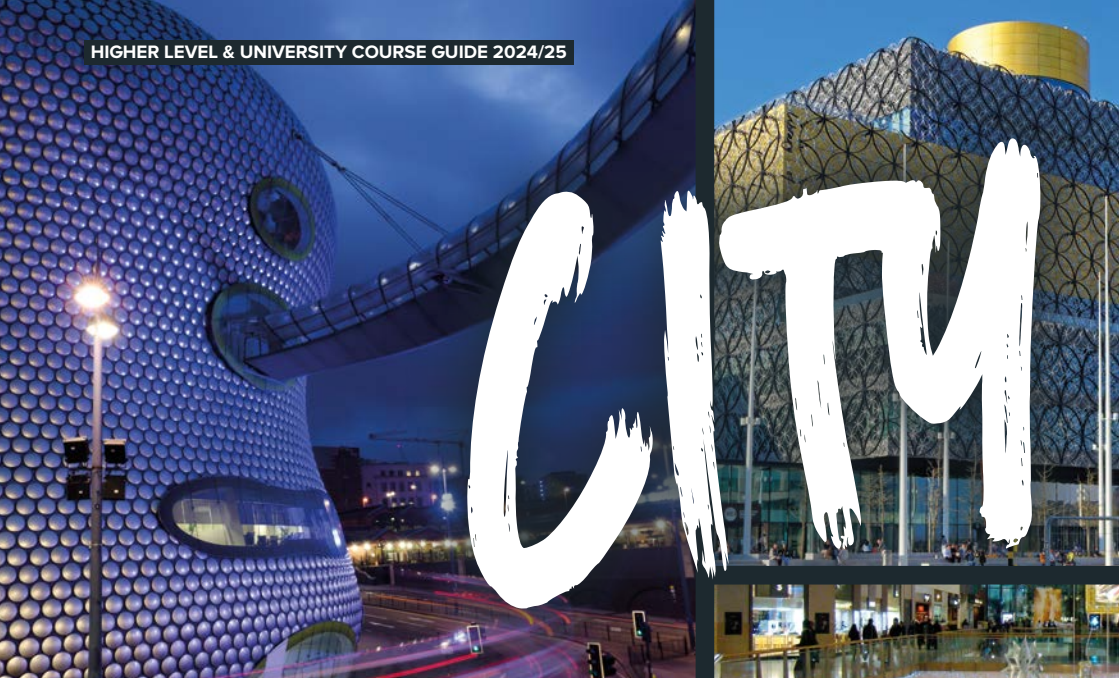
As well as being a very experienced team they also work with many external agencies such as Forward Thinking Birmingham, GPs, Umbrella, food banks and job centres, St Basils and many more. The college can act as a referral point to other agencies for specialist advice and support. The welfare team are also part of the Safeguarding Triage Team and deal with initial safeguarding reports from staff and students.

LEARNING SUPPORT

If you have an additional learning need, our experienced team can support you in your studies. When you apply, please let us know about any additional help you may require so we can discuss your needs in detail before you start your course. Where specific learning needs are identified (e.g. where a disability is declared), the course team will liaise with our Student Services to ensure that your requirements are met.

From our communication support officers to our dyslexia tutors, to our learner support assistants and in-class teaching assistants, our qualified staff are here to support you during your studies.

For more information regarding wellbeing support and advice, please visit our website via: www.sccb.ac.uk/student-life/student-services/



Did you know Birmingham has more miles of canals than Venice and more than 500,000 works of art in one square mile? Birmingham is also the youngest city in Europe with almost 40% of the population being under 25.

Not only is Birmingham one of the UK's most exciting and diverse cities, but it is also one of the most accessible.

Our Digbeth campus is based at the centre of the UK's road, rail and coach networks, so travelling to and from Birmingham is no problem, while commuting from the surrounding area to campus is easy to do.

Our Bournville (Longbridge) campus is based in the communal area of Longbridge, with hot transport links via road, rail and bus. With a large shopping centre on the campus doorstep, you're sure to find everything you need just a short walk away.

SHOP 'TIL YOU DROP

Birmingham boasts an incredible shopping scene, from the iconic Bullring & Grand Central with over 200 stores to quirky vintage shops in Digbeth. Fashionistas and bargain hunters alike will find their retail haven here.

ATTRACTIONS GALORE

Immerse yourself in Birmingham's rich history by visiting Cadbury World or exploring the historic Jewellery Quarter. The futuristic Library of Birmingham offers stunning city views from the accessible roof, and the Birmingham Museum and Art Gallery houses an extensive collection of art and artifacts.



LIFE IN BIRMINGHAM

CULINARY ADVENTURES

Birmingham's culinary scene is a global journey. Savour world cuisines at the Balti Triangle, enjoy Michelin-starred dining, or grab a tasty bite at Digbeth Dining Club – a street food paradise.

SPORTS ENTHUSIASTS REJOICE

Whether you're a football fan cheering at Villa Park or St Andrew's, a cricket enthusiast at Edgbaston Stadium, or a tennis aficionado at the prestigious Nature Valley Classic, Birmingham is a sports lover's paradise.

ART AND CULTURE HUB

Immerse yourself in Birmingham's vibrant cultural scene. Enjoy live music at the

Symphony Hall, explore contemporary art at the Ikon Gallery, or catch a show at the Hippodrome Theatre.

GREEN OASIS

Escape the urban hustle in Birmingham's lush green spaces. Cannon Hill Park and Lickey Hills provide serene environments for relaxation and outdoor activities. Sutton Park is a 2,400 acre National Nature Reserve and is one of the largest urban parks in Europe.

In Birmingham, you'll find a perfect balance between academic excellence and a vibrant lifestyle. Join us in this diverse and dynamic city, where opportunities and adventures await at every corner.

ACCOMMODATION AVAILABLE

For many of our Higher Education students, finding the right accommodation is an essential part of the University experience.

It helps you to develop a sense of independence and learn key life skills. Although the college doesn't own halls of residence, there is a wide range of accommodation available across Birmingham for students to rent if you are travelling from afar and need somewhere to stay.

As a college, we recommend using platforms such as:

Unite Students:
unitestudents.com

Student ROOST:
studentroost.co.uk

LUNA:
lunastudents.co.uk

If you are worried or struggling to find suitable accommodation, please contact our Student Services team who will be able to give you further advice and information. More information can be found via:
www.sccb.ac.uk/student-life/student-services/

APPLICATION PROCESS

STEP 1

FIND YOUR COURSE

Have a look at our website to find out more about what course is right for you.

STEP 2

COME AND SEE US

At our Open Days, you can chat with staff and students, view our facilities, and learn more about what we have on offer.

STEP 3

APPLY ONLINE

If you're ready to make that right choice, hit that apply button in the relevant course pages on our website.

STEP 4

RECEIVE AN OFFER

Once we have reviewed your application, we may choose to make you an offer. Or in some cases, an interview, portfolio or audition will be required first.

STEP 5

KEEP IN TOUCH

We will communicate with you via our application portal, using the email address provided in your application.

STEP 6

DON'T FORGET YOUR ACCOMMODATION

Once you've accepted a course offer, if you need to apply for your accommodation – now is the time. More information about our recommendations can be found on our website.

STEP 7

SORT OUT YOUR FINANCES

You'll need to apply online for student finance, and may need to provide proof of ID and income.

STEP 8

RESULTS AND CONDITIONS

Before your place is confirmed, you'll need to meet any conditions in your offer – usually this is done by achieving certain exam results.

STEP 9

ENROLMENT AND ARRIVALS

Before you arrive on campus, you'll receive an email to enrol online and officially become an SCCB student.

CLEARING

If you apply after the 30th June or are not holding an offer from another university or higher education provider, you will be eligible for Clearing. The college online clearing support service opens in early July, with a short communication form available on A Level results day. If you don't have a confirmed offer and are in clearing, please get in touch.

ENTRY REQUIREMENTS

As a college, we believe everyone should have a right to education.

That's why we welcome applicants with a mix of academic and vocational qualifications and consider each application on its merits. Entry requirements vary between courses. Please check our website for details.

DATA PROTECTION

The information you provide on your application form will be used to help us decide about whether you can be offered a place. Full details about how we process your information can be found at www.sccb.ac.uk/compliance/freedom-of-information/

AS Level	UCAS points
A	20
B	16
C	12
D	10
E	6

Please note: The AS score and A2 score for a single subject cannot be combined, you must calculate for your final grade at A2 level.

UCAS tariff points	T Level overall grade
168	Distinction*
144	Distinction
120	Merit
96	Pass (C or above on the core)
72	Pass (D or E on the core)

DEFERRED ENTRY

If you are thinking about taking a year out before studying with us, we will be happy to consider your application for deferred entry. Applicants need to have met all conditions of entry by 31 August of the cycle in which the application was made.

See below for points tariff information.

T LEVELS

South & City College Birmingham recognises and accepts T Levels for progression to higher education, and specific entry requirements are stated on our course pages on our website.

A Level	UCAS points
A*	56
A	48
B	40
C	32
D	24
E	16

BTEC Level 3 National Diploma	UCAS points
D*D*	112
D*D	104
DD	96
DM	80
MM	64
MP	48
PP	32

HTQs



High Technical Qualifications (HTQs) present an innovative pathway distinct from apprenticeships or traditional degrees. Tailored for those seeking a more hands-on, industry-focused learning experience, HTQs offer a different approach to education.

Accredited by the Institute for Apprenticeships and Technical Education, HTQs encompass diverse levels, including new and existing qualifications at levels 4 and 5.

Among the various HTQ types are higher national diplomas (HNDs), higher national certificates (HNCs), foundation degrees, and higher education diplomas. Look out for the HTQ logo or banner which will always show on approved qualifications.

ENTRY REQUIREMENTS

Applicants need to be 18 or older and living in England. You can apply whilst still at school and entry requirements will vary between courses.

Upon successful completion of an HTQ, graduates start their career path by either seeking employment within their desired field, pursuing further education like obtaining a traditional degree, or engaging in volunteer work to enhance their skill set and practical experience.

COURSE	LEVEL	CAMPUS
HND Computing for England	5	Digbeth
COMING SOON: HND Leadership & Management	5	Digbeth
COMING SOON: HNC/D Engineering for England	4/5	Longbridge
COMING SOON: HNC/D Early Years Practitioner	4/5	Digbeth



QUALIFICATION LEVELS EXPLAINED

This brief guide clarifies different qualification types and explains education levels: www.sccb.ac.uk/qualifications-explained/

“LECTURES ARE WELL-BALANCED WITH
PRACTICAL ELEMENTS.” **SIMON, BUSINESS STUDENT**



OUR COURSES

Course information is correct at the time of print. The college may change course information as deemed necessary. Please check on enrolment/application for up-to-date course details.

COURSE
INFORMATION

BUSINESS+FINANCE

Business covers so many diverse and relatable topics, opening doors to many senior career opportunities.

CAREERS RELATED TO BUSINESS+FINANCE INCLUDE:

Accountant

Business Adviser

Consultant

Corporate Investment Banker

Data Scientist

Stock Market Analyst

COURSE	LEVEL	CAMPUS
BA (Hons) Business & Management Top-Up (Awarded by Newman University)	6	Digbeth
HND Business & Management	5	Digbeth
HND Business (Accounting & Finance)	5	Digbeth
HND Business (Marketing)	5	Digbeth
COMING SOON: HND Leadership & Management*	5	Digbeth

*HTQ course



COURSE
INFORMATION

COMPUTING, DIGITAL+IT

Log into your future
with our exciting range
of computing and
digital courses.

CAREERS RELATED TO COMPUTING INCLUDE:

Software Engineer

Network Engineer

Software Tester

Cyber Security Technologist Risk
Analyst

Cyber Security Analyst

System Analyst

I.T. Consultant

Information Manager

COURSE

LEVEL

CAMPUS

HND Computing for England (Cyber Security)*

5

Digbeth

*HTO course



COURSE
INFORMATION

CONSTRUCTION

Build your understanding of construction to a professional level with our industry-focused approach to teaching.

CAREERS RELATED TO CONSTRUCTION INCLUDE:

Civil Engineering Senior Technician

Construction Design & Build Technician

Construction Site Supervisor

HVAC Engineer

Construction Project Manager

Sustainability Specialist

Building Services Manager

Construction Project Manager

Sustainability Manager

COURSE	LEVEL	CAMPUS
BSc (Hons) Building Services Engineering Final Year/Top-Up (Awarded by De Montfort University)	6	Longbridge
BSc Civil Engineering	6	Longbridge
HNC Construction Management & Sustainability (Awarded by De Montfort University)	4	Longbridge
Higher Certificate in Education Civil Engineering (Awarded by De Montfort University)	4	Longbridge
Higher Certificate in Education Construction Management & Sustainability (Awarded by De Montfort University)	4	Longbridge
HNC Construction	4	Longbridge
Certificate in Higher Education Building Services Engineering (Awarded by De Montfort University)	4	Longbridge
Higher Construction Site Supervision Apprenticeship	4	Longbridge

COURSE
INFORMATION

EARLY YEARS

Are you nurturing, caring and have a genuine interest in supporting children and families? Find out more about our Early Years courses.

CAREERS RELATED TO EARLY YEARS INCLUDE:

Early Years Teacher
Education Consultant
Education Mental Health Practitioner
Family Support Worker
Health Play Specialist
Learning Mentor
Play Therapist
Social Worker
Teaching Assistant

COURSE	LEVEL	CAMPUS
BA (Hons) Working with Children & Families Top-Up (Awarded by Newman University)	6	Digbeth
Foundation Degree Early Years (Awarded by Birmingham City University)	5	Digbeth
HND Early Childhood Education & Care	5	Digbeth
COMING SOON: HNC/D Early Years Practitioner	4/5	Digbeth

*HTQ course



COURSE
INFORMATION

EDUCATION +TEACHING

Our post-16 teaching qualification will help prepare learners for a career in the classroom and beyond.

CAREERS RELATED TO EDUCATION AND TEACHING INCLUDE:

Further Education Teacher

Education Administrator

Education Consultant

Education Mental Health Practitioner

English as a Foreign Language Teacher

COURSE	LEVEL	CAMPUS
DET Post-Compulsory Education & Training (PCET) (Awarded by Birmingham City University)*	5	Longbridge

***Name changing to Diploma in Teaching (FE and Skills) (Awarded by Birmingham City University) – subject to validation later in 2024.**



COURSE
INFORMATION

ENGINEERING

Our engineering courses enable learners to contribute to the quality of life for everyone, providing solutions to real world problems and leading major transformation.

CAREERS RELATED TO ENGINEERING INCLUDE:

Engineering Manufacturing Technician
Product Development Manager
Mechanical Engineer
CAD Technician
Technical Sales Engineer
Electrical Engineer
Electronics Engineer

COURSE	LEVEL	CAMPUS
BSc (Hons) Building Services Engineering Final Year/Top-Up (Awarded by De Montfort University)	6	Longbridge
BSc Civil Engineering	6	Longbridge
Foundation Degree Electrical & Electronic Engineering (Awarded by University of Birmingham)	5	Longbridge
COMING SOON: HNC/D Engineering for England*	4/5	Longbridge
HNC/D Mechanical Engineering for England	4/5	Longbridge
Higher Certificate in Education Civil Engineering (Awarded by De Montfort University)**	4	Longbridge
HNC Civil Engineering (Awarded by De Montfort University)**	4	Longbridge
HNC Engineering with Foundation Year (Mechanical, Manufacturing or Electrical & Electronic)	4	Longbridge
IMI Award in Electric/Hybrid Vehicles Maintenance Diagnostic	4	Longbridge
Higher Building Services Engineering Technician Apprenticeship	4	Longbridge

*HTQ course

**Additional January start option



COURSE
INFORMATION

FASHION

Whether you're looking to create digital fashion designs or something traditional, sew your future with our professional courses.

CAREERS RELATED TO FASHION INCLUDE:

Fashion Designer

Fashion Stylist

Patternmaker

Retail Buyer

Retail Manager

COURSE

HNC Art & Design Fashion & Textiles

LEVEL CAMPUS

4 Fusion



COURSE
INFORMATION

HEALTHCARE

With courses built around hands-on practical experience, our health & social care qualifications enable learners to develop their skills and passion for caring.

CAREERS RELATED TO HEALTHCARE INCLUDE:

Senior Care Assistant

Senior Support Worker in a
Range of Health & Care Settings

Health Educator

Public Health Practitioner

Wellbeing Co-ordinator

COURSE

HNC Healthcare Practice

LEVEL

4

CAMPUS

Digbeth

COURSE
INFORMATION

MUSIC

Music at South & City College Birmingham will train students to take on the roles required to deliver excellence, and gives learners the opportunity to develop their performance, vocal and technical skills.

CAREERS RELATED TO MUSIC INCLUDE:

Music Producer

Music Therapist

Musician

Music Teacher

Sound Designer

Sound Engineer

Sound Technician, Broadcasting/
Film/Video

Special Effects Technician

COURSE	LEVEL	CAMPUS
BA (Hons) Popular Music (Awarded by Birmingham City University)	6	Digbeth
Foundation Degree Popular Music (Awarded by Birmingham City University)	5	Digbeth



COURSE
INFORMATION

SPORTS

No matter what your skill level, our sporting qualifications will help you achieve your career aspirations.

CAREERS RELATED TO SPORT INCLUDE:

Sports Coach

Youth Sports

Community Sports Co-ordinator

Physical Education (PE) Teacher

Sports Coach Educator/Trainer

Fitness Centre Manager

COURSE	LEVEL	CAMPUS
FdSc Sport Coaching, Science & Performance (Awarded by Newman University)	5	Longbridge

DOWNLOAD OUR COLLEGE APP



COMMUNICATE

with your class members and tutors.

ACCESS COLLEGE SERVICES

and get the latest college news and events.

ACCESS YOUR TIMETABLE

and course information on the go.

Receive REAL-TIME UPDATES



Available on the
App Store



ANDROID APP ON

Google Play



SEARCH

'SOUTH AND CITY COLLEGE STUDENTS'

LIVING HIS BEST LIFE



BA (HONS) IN POPULAR MUSIC STUDENT TOURS THE WORLD

Keyboard player Zak Craner studied for his BA (Hons) in Popular Music at South & City College Birmingham Digbeth campus 10 years ago.

In 2022, Zak toured worldwide with Louis Tomlinson, ex-One Direction star. The tour completed the USA leg and arrived in Poland for the European leg, before heading to South America and Australia. Zak secured the gig after a London audition, marking his first global tour despite prior UK tours with renowned acts. He performed across various US cities, including New York, Chicago, LA, Nashville and Indianapolis.



Reflecting on his time with South & City College Birmingham, Zak praised its rare fully equipped auditorium and top-notch facilities, unlike his previous West Midlands college that lacked proper equipment. Encouraged to attend an Open Day at Digbeth campus, he met experienced music tutors like Nils, Simon, and Harvey, which left a lasting positive impression.



He appreciated the free access of recording studios, highlighting their industry-standard software. Zak advised aspiring music students to make use of these opportunities, emphasising diversifying skills for a sustainable career, involving both music performance and production. He suggested leveraging social media for showcasing skills, urging regular practice and sharing videos to attract attention from music directors for potential audition invitations.

EMPOWERING FUTURES



MARTIN & HAMED'S TRAILBLAZING ENGINEERING JOURNEY AT SOUTH & CITY COLLEGE BIRMINGHAM

Hamed & Martin both started the Foundation Degree in Electrical & Electronic Engineering in 2019 at the Bournville campus Longbridge. It took 2 years to complete and it was a course that was a collaboration between the University of Birmingham, University College Birmingham and South & City College Birmingham.

By 2023 Martin had just finished his undergraduate degree with the University of Birmingham and Hamed had just started his PhD in medical robotics, designing a low-cost robot for surgeons to perform life-saving procedures remotely from anywhere in the world. They both have now returned to South & City College Birmingham, but as lecturers, teaching Engineering.

Reflecting on the Foundation Degree's impact, Martin shared, "It provided a strong foundation, easing the transition from college to university. The core concepts learned were instrumental in levelling up."

Hamed added, "Going via the college had many advantages. We were paying less in tuition fees and we also had more time to work part-time. Smaller class sizes allowed more interaction between students and tutors when compared to university."

WHY SHOULD BUDDING ENGINEERS STUDY AT HIGHER EDUCATION LEVEL?

Hamed explained, "Engineering has become very specialised. If you want to be an expert in one field, you need to go into detail on that. The only academic way to achieve this is to do higher education. It does depend on your preference, of course. I have been able to help some students who weren't originally interested in moving up to a degree. I could understand them as I was in their position before as a student of the college."

STUDENT FEEDBACK

"MODULES ARE WORK
RELATED, LINKED TO
MANAGEMENT AND
SENIOR I.T. ROLES."

EMMA, COMPUTING STUDENT

"SOUND DESK SYSTEM/
EQUIPMENT HAS BEEN
AN EXCELLENT ADDITION."

RYAN, MUSIC STUDENT

"BRINGING IN GUEST
SPEAKERS TO SHARE
INFORMATION HAS BEEN
HELPFUL AND INTERESTING."

HANNAH, HEALTH STUDENT

"MY COURSE FITS VERY
WELL AROUND WORK."

ZAYAN, CONSTRUCTION STUDENT





READY TO JOIN US?

VISIT OUR CAMPUSES:

Monday-Thursday: 8am-4pm
Friday: 8am-3pm

GIVE US A CALL:

0121 694 5000

EMAIL US:

hello@sccb.ac.uk

NEED MORE INFORMATION?

Reach out via: sccb.ac.uk/contact

COURSE ADVICE

Interested in studying with us and need more course information? Email our Admissions team to discuss your options: admissions-shared@sccb.ac.uk

SAFEGUARDING

If you're worried for yourself or someone else, contact us at: safeguarding@sccb.ac.uk

STUDENTS WITH DISABILITIES

Apply & find out more about the Disabled Students Allowance via: gov.uk/disabled-students-allowance-dsa

Reach out to our Student Services Team who can support your learning journey via studentservices@sccb.ac.uk

APPRENTICESHIPS

Find out more about our Apprenticeships at: sccb.ac.uk
Contact our team for more information via apprenticeshipteam@sccb.ac.uk or 0121 694 5066



SOUTH & CITY COLLEGE
BIRMINGHAM
& UNIVERSITY CENTRE

THE RIGHT CHOICE FOR YOU

Once you've made an application,
get a taste for college life at
South & City College Birmingham by
downloading the college app **FREE**
to your device on both the App Store
and Google Play.



SCCB.AC.UK | 0121 694 5000 | HELLO@SCCB.AC.UK



All course information is subject to change as deemed necessary
by the college. For up-to-date information please check when you
apply or enrol on your course.